

BUS ROUTE:
Bus Zone 6B

SITE TO TOWN

DAYS:

PICK-UP TIMES:
 REFER TO BUS TIMETABLE

STOPS:

- Rainbow Creek Dr
- Millennium Dr
- Morgan Ave
- Rainbow Creek Dr

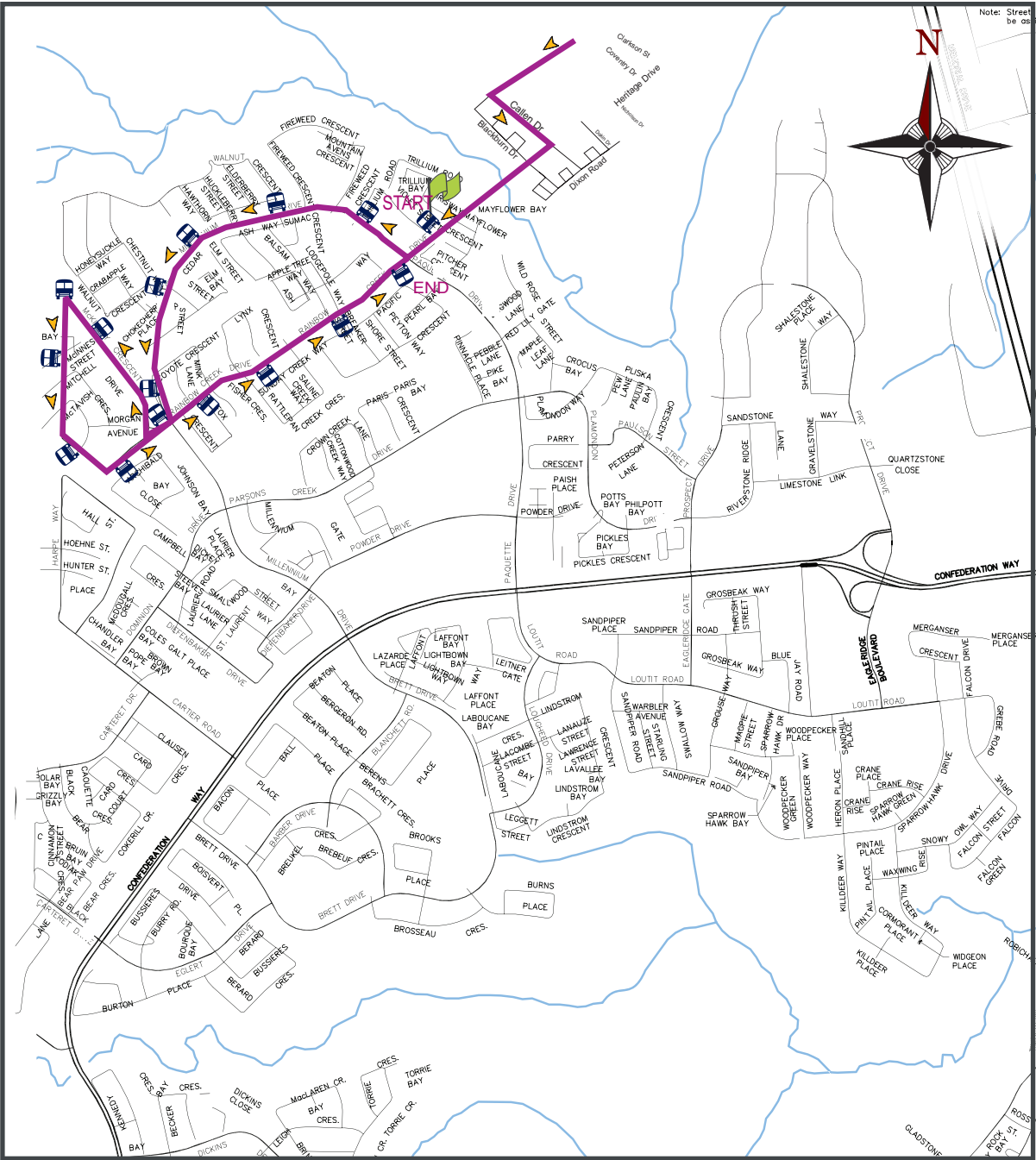
= Transit Stop = Non-Transit Stop

PICK-UP: SYNCRUDE SITE

SITE TO TOWN(PURPLE)
SYNCRUDE ROUTE A

UPDATED October 1, 2018

Syncrude Bus Zone 6B



*All information contained on this website is proprietary to Diversified Transportation Ltd. Copying, altering and/or distribution of any of the content is strictly prohibited