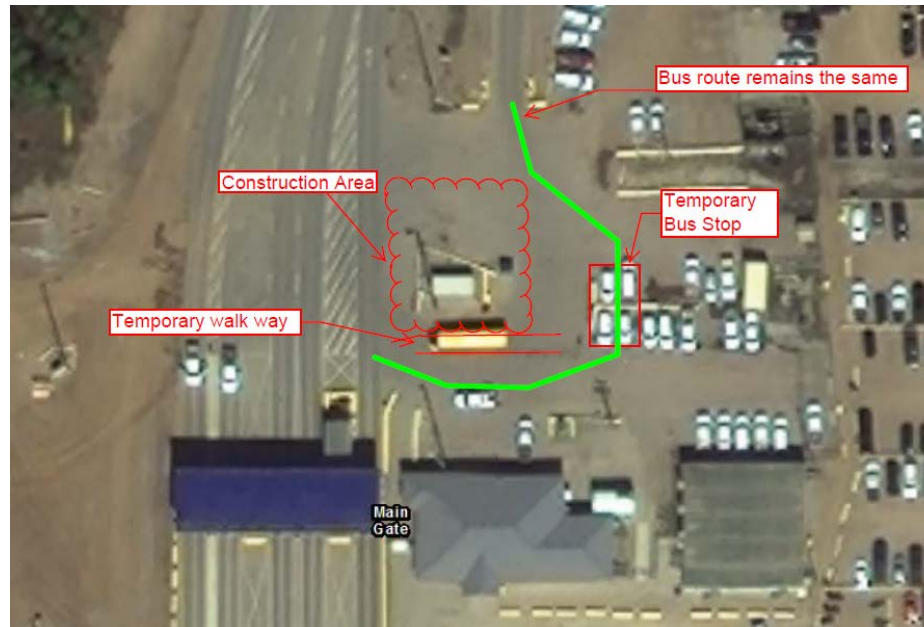


Facilities Information Bulletin

Construction Activities 14 Aug – 15 Sep Main Gate Parking Area



Bus and foot traffic at the Main Gate will be re-routed for construction during the period of 14 Aug – 15 Sep.

During this period, the old bus shelter will be demolished and replaced with a new structure. The construction will be limited in order to not interfere with shift changes or other high traffic periods. Demolition and construction will alter light vehicle parking for the duration. Please obey all signage and flagging in the area during this period.

Issued by: Shawn Alexander, Facilities Projects, (780)791-8307